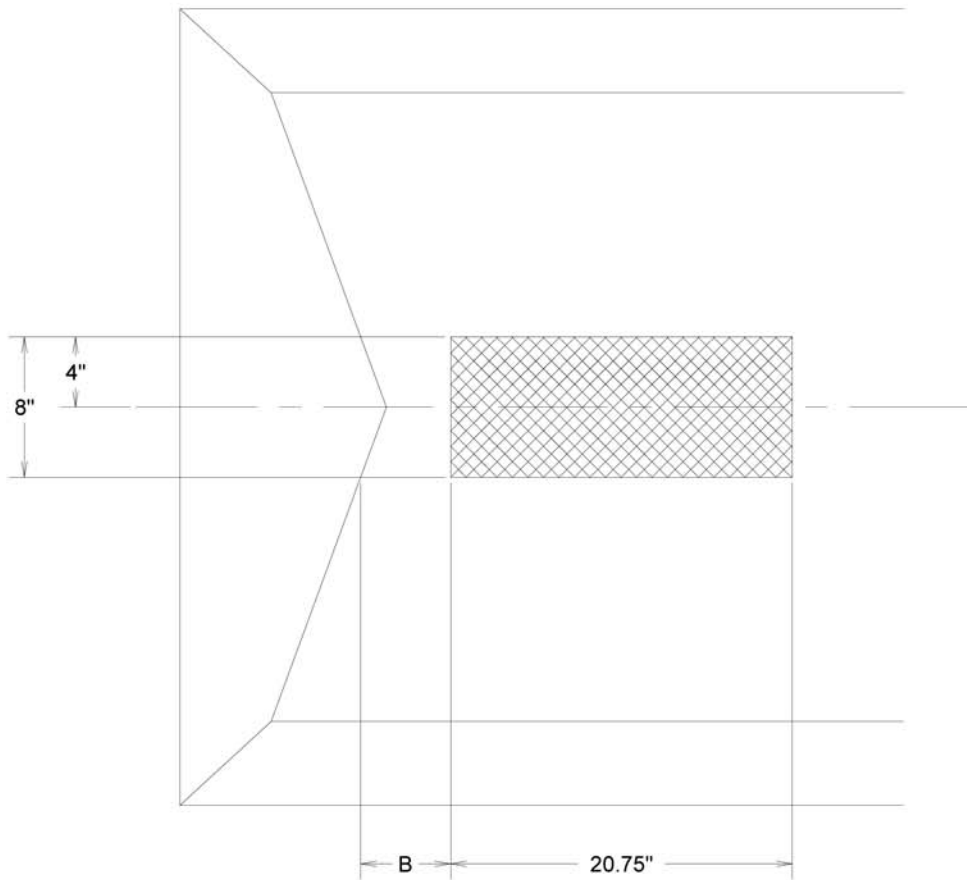




INTAKE INSTALLATION

Part #150-H02155



IMPORTANT:

IN ORDER TO ESTABLISH LENGTH "B", ANGLE "A" MUST FIRST BE DETERMINED.

NOTE:

LENGTH "B" IS ALWAYS MEASURED 4" OFF BOAT CENTER LINE.

TRANSOM ANGLE "A" DEGREES	LENGTH OF "B" IN INCHES
9°	3 ³ / ₄ "
10°	3 ⁹ / ₁₆ "
11°	3 ³ / ₈ "
12°	3 ¹ / ₈ "
13°	3"
14°	2 ¹³ / ₁₆ "
15°	2 ⁵ / ₈ "
16°	2 ⁷ / ₁₆ "